

Wye Valves

- All C & S Supply, Inc. Wye Valves meet or exceed USDA FS 5100 Series Specifications
- Fully Hard anodized aluminum construction for durable and superior performance
- Hard anodized Aluminum Balls with full 1.5" waterways for less friction loss
- Front and rear seats to stabilize the valve operation
- Low profile handles to keep from getting caught when the valve is dragged
- Several inlet and outlet size combinations to meet any daily needs
- Choose NST or NPSH thread patterns

WV1010

1" Fe. Swivel x (2) 1" M. Outlets

Any combination of NST or NPSH



WV1510

1.5" Fe. Swivel x (2) 1" M. outlets

Any combination of NST or NPSH

Also available 1.5" Fe. x 1.5" M. x 1" M. outlets



WV15

1.5" Fe. Swivel x (2) 1.5" M. outlets

Any combination of NST or NPSH



WV2510

2.5" Fe. Swivel x (2) 1" M. outlets

Any combination of NST or NPSH

Also available 2.5" Fe. X 1.5" M. x 1" M. outlets



WV2515

2.5" Fe. Swivel x (2) 1.5" M. outlets

Any combination of NST or NPSH



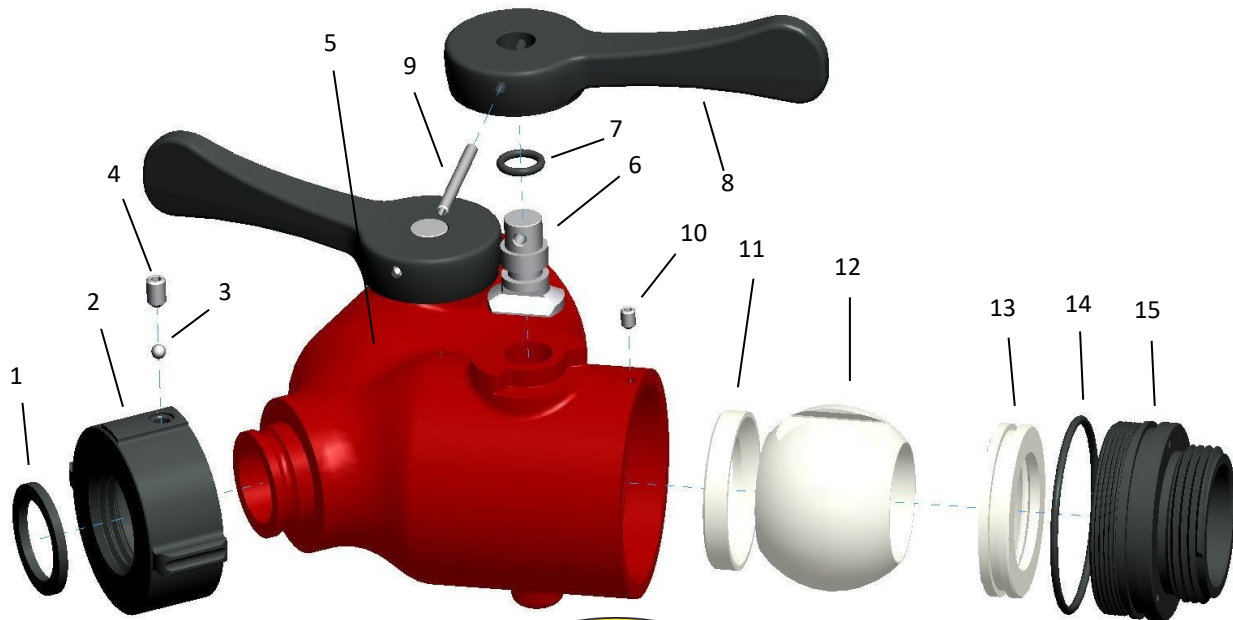
253-C 42nd Street SW Loveland CO 80537

Phone: 970-663-4966 - Sales@cssupplyinc.com - www.CSSupplyinc.com

Parts and Assembly

WV1010

WV1010				
ITEM	QTY	P/N	DESCRIPTION	MATERIAL
1	1	GASKET_10	GASKET, 1"	SBR-70-BLACK
2A	1	1736_10_NH	SWIVEL NUT , 1" NST	6061-T6-ALUM
2B	1	1736_10_NP	SWIVEL NUT, 1" NPSH	6061-T6-ALUM
3	30	1611	BALL BEARINGS, 3/16"	303 STAIN STL
4	1	1610	SET SCREW, 1/4"-28 X 3/8"	6061-T6-ALUM
5	1	1701_10	WYE, BODY, 1010	356-T6- ALUM
6	2	1718	SHAFT	6061-T6-ALUM
7	2	0-111	O-RING, 111 SHAFT	BUNA-70
8	2	1742	HANDLE	6061-T6-ALUM
9	2	1708	ROLL PIN, 5/32" X 1.75"	303 STAIN STL
10	2	1724	SET SCREW, 10"-32 X 3/16"	BLACK STL
11	2	1711	BALL SEAT	NYLON
12	2	1715	BALL	NYLON
13	2	1722	BALL SEAL	TPU
14	2	0-141	O-RING MALE END	BUNA-70
15A	2	1725_NH	OUTLET, MALE 1" NST	6061-T6-ALUM
15B	2	1725_NP	OUTLET, MALE 1" NPSH	6061-T6-ALUM



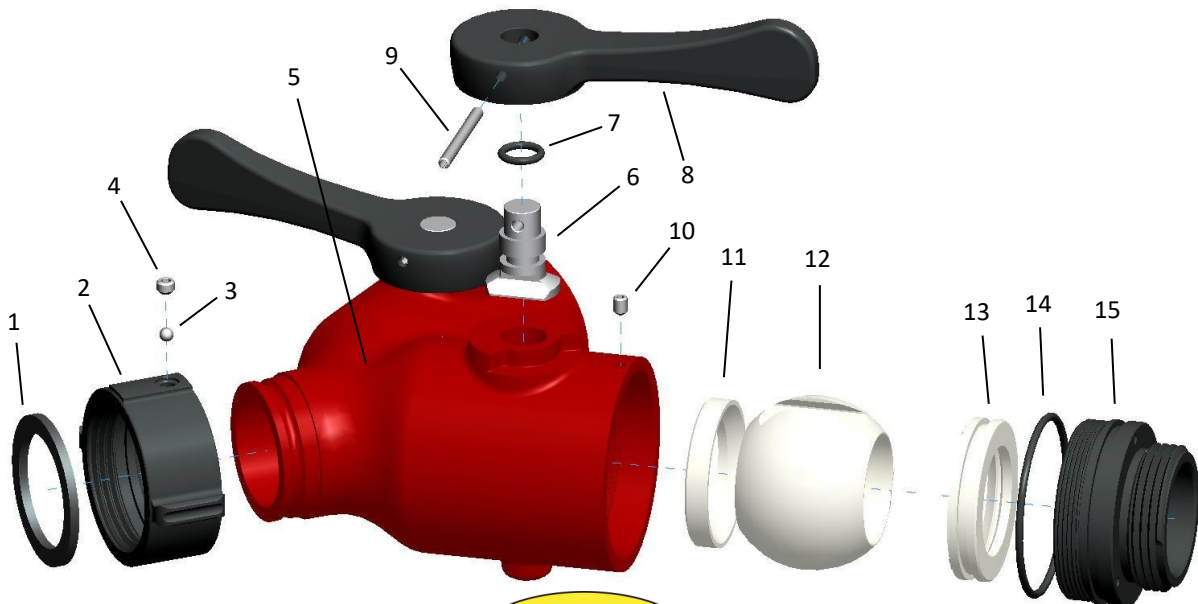
253-C 42nd Street SW Loveland CO 80537

Phone: 970-663-4966 - Sales@cssupplyinc.com - www.CSSupplyinc.com

Parts and Assembly

WV15 / WV1510

WV15/WV1510				
ITEM	QTY	P/N	DESCRIPTION	MATERIAL
1	1	GASKET_15	GASKET, 1.5"	SBR-70-BLACK
2A	1	1736_15_NH	SWIVEL NUT, 1.5" NST	6061-T6 ALUM
2B	1	1736_15_NP	SWIVEL NUT, 1.5" NPSH	6061-T6 ALUM
3	30	1611	BALL BEARINGS, 3/16"	303 STAIN STL
4	1	1610	SET SCREW, 1/4"-28 X 3/8"	6061-T6 ALUM
5	1	1701_15	BODY, WYE, 15/1510	356-T6 ALUM
6	2	1718	SHAFT	6061-T6 ALUM
7	2	0-111	O-RING, SHAFT	BUNA-70
8	2	1742	HANDLE	6061-T6 ALUM
9	2	1708	ROLL PIN, 5/32" X 1.75"	303 STAIN STL
10	2	1724	SET SCREW, 10"-32 X 3/16"	BLACK STL
11	2	1711	BALL SEAT	NYLON
12	2	1715	BALL	NYLON
13	2	1722	BALL SEAL	TPU
14	2	0-141	O-RING MALE END	BUNA-70
15A	2	1726_NH	OUTLET, MALE 1.5" NST	6061-T6-ALUM
15B	2	1726_NP	OUTLET, MALE 1.5" NPSH	6061-T6-ALUM
15C	2	1725_NH	OUTLET, MALE 1" NST	6061-T6-ALUM
15D	2	1725_NP	OUTLET, MALE 1" NPSH	6061-T6-ALUM



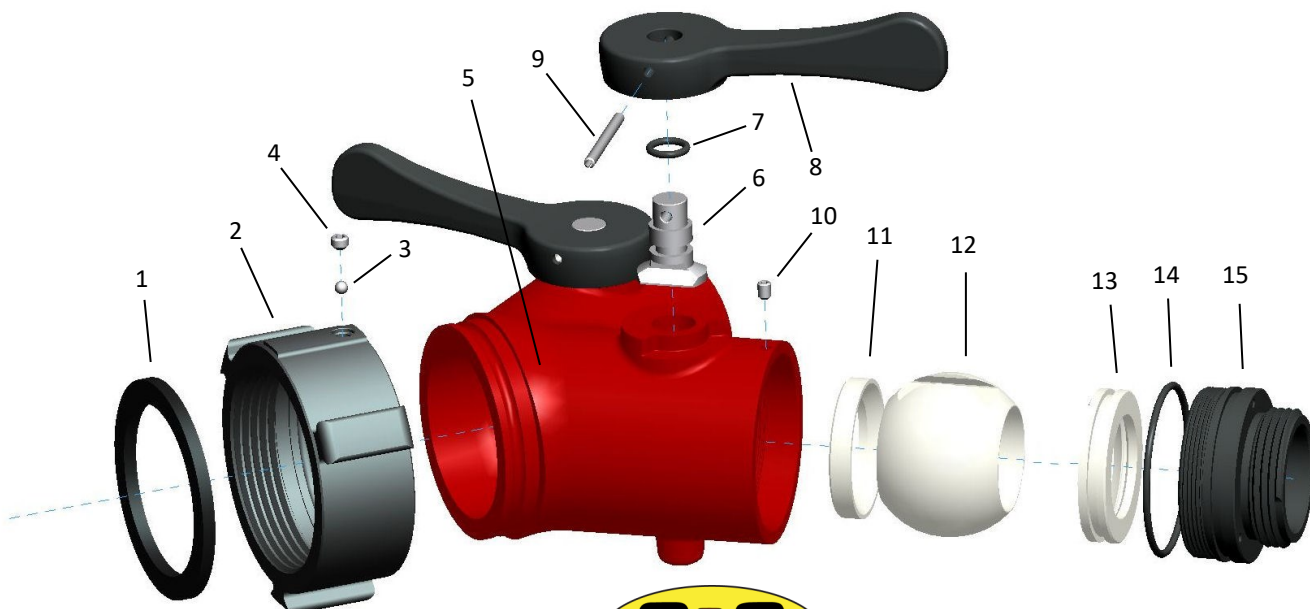
253-C 42nd Street SW Loveland CO 80537

Phone: 970-663-4966 - Sales@cssupplyinc.com - www.CSSupplyinc.com

Parts and Assembly

WV2515 / WV2510

WV2515/WV2510				
ITEM	QTY	P/N	DESCRIPTION	MATERIAL
1	1	GASKET_25	GASKET, 2.5"	SBR-70-BLACK
2	1	1603_NH	SWIVEL NUT, 2.5" NST	6061-T6 ALUM
3	45	1611	BALL BEARINGS, 3/16"	303 STAIN STL
4	1	1610	SET SCREW, 1/4"-28 X 3/8"	6061-T6 ALUM
5	1	1702	BODY, WYE, 2510/2515	356-T6 ALUM
6	2	1718	SHAFT	6061-T6 ALUM
7	2	0-111	O-RING, SHAFT	BUNA-70
8	2	1742	HANDLE	6061-T6 ALUM
9	2	1708	ROLL PIN, 5/32" X 1.75"	303 STAIN STL
10	2	1724	SET SCREW, 10"-32 X 3/16"	BLACK STL
11	2	1711	BALL SEAT	NYLON
12	2	1715	BALL	NYLON
13	2	1722	BALL SEAL	TPU
14	2	0-141	O-RING MALE END	BUNA-70
15A	2	1726_NH	OUTLET, MALE 1.5" NST	6061-T6-ALUM
15B	2	1726_NP	OUTLET, MALE 1.5" NPSH	6061-T6-ALUM
15C	2	1725_NH	OUTLET, MALE 1" NST	6061-T6-ALUM
15D	2	1725_NP	OUTLET, MALE 1" NPSH	6061-T6-ALUM



253-C 42nd Street SW Loveland CO 80537

Phone: 970-663-4966 - Sales@cssupplyinc.com - www.CSSupplyinc.com